

# TURNSTAR



RELIABLE ★ DURABLE ★ GUARANTEED

## USER MANUAL



### Special Needs Gate Automatic

**CONTENTS**

**1. LAYOUT ..... 3**  
Figure 1: Typical layout of Pulse Special Needs Gate ..... 3

**2. PREPARATION FOR INSTALLATION ..... 5**  
Figure 2: Installation clearance for the gate..... 5  
Figure 3: Base ring positioning & bolting holes..... 6

**3. PARTS ..... 7**  
Figure 4: Gate frame Assembly ..... 7

**4. OPENING & INSTALLATION ..... 8**

**5. CONNECTIONS AND SETUP ..... 9**  
Figure 5: PAG700V02 Controller & Connections..... 10  
Figure 6: Client trigger connections..... 11

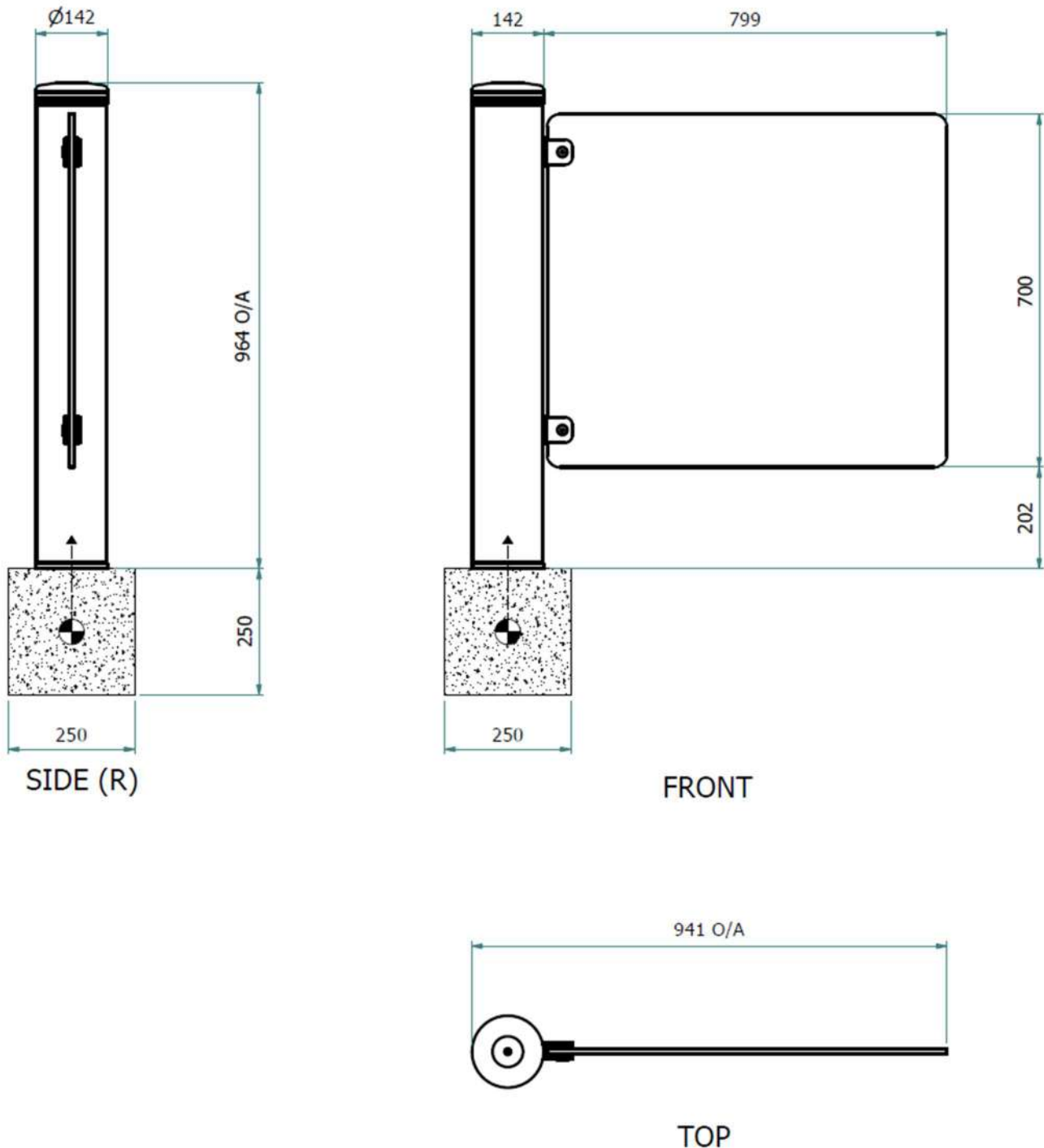
**6. POWER SUPPLY AND VOLTAGE SELECTION..... 12**  
Figure 7: Power supply mains change 220v - 110v..... 12

**7. CONTROLLER SWITCH SETTINGS..... 13**

**8. DRAWINGS ..... 15**

## 1. LAYOUT

1.1. Below is a typical layout for the gate. A plinth is required to be 250x250 wide and long, and 250mm deep. The concrete should be at least 15MPa strength, or to a civil engineers' specifications.

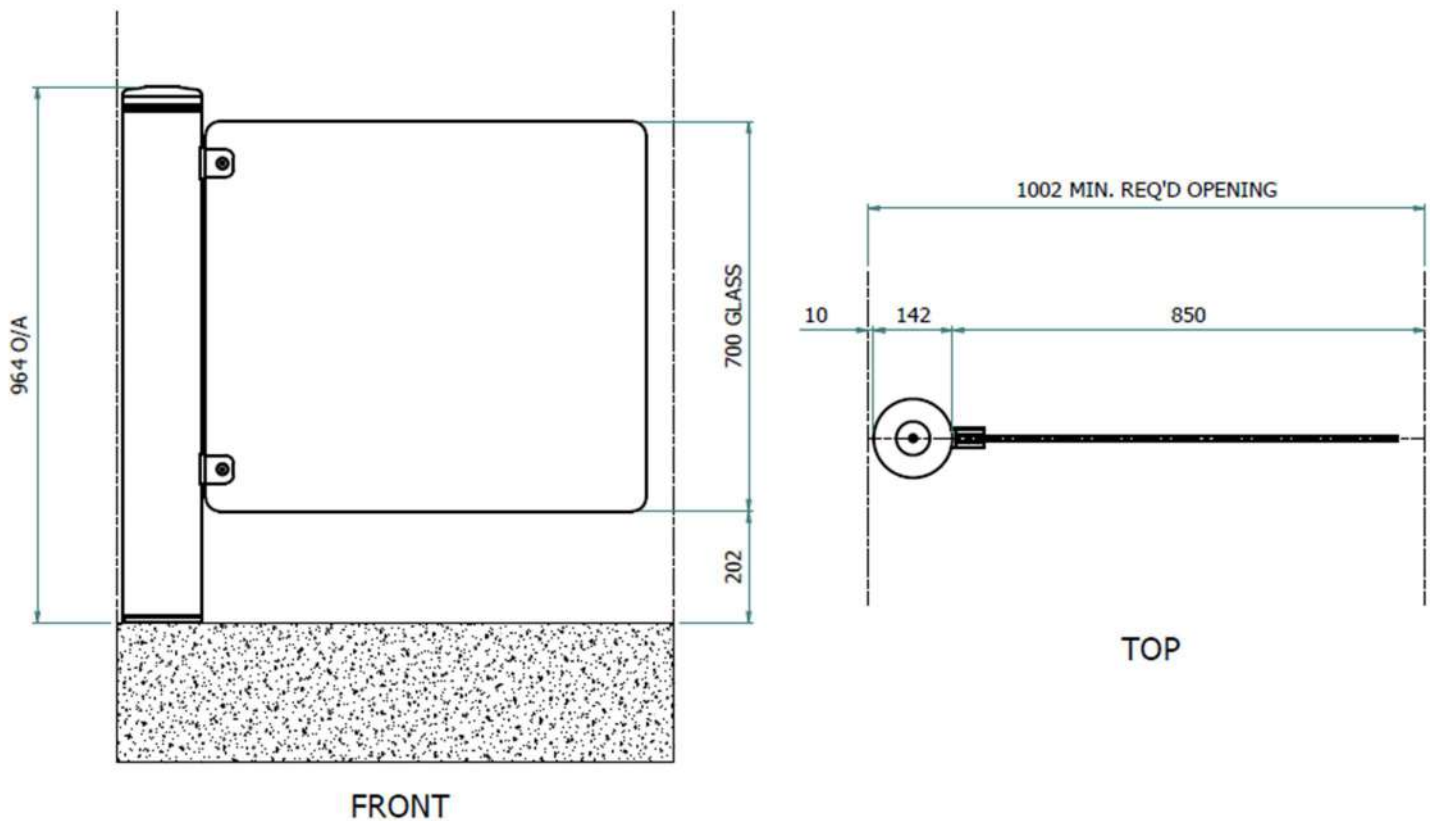


**Figure 1: Typical layout of Pulse Special Needs Gate**

- 1.2. The gate should be bolted down using 4 x RAWL sleeve anchors, M10 hex head cap screws at least 100mm deep.
- 1.3. There is a 76mm diameter hole in the centre of the base ring for power & control cable allowance.
- 1.4. The gate has a built-in controller and power supply and requires 220v AC 50Hz single phase power to be led to it. (For USA installations supplying 110V, see section 6)
- 1.5. The controller uses a common and a trigger for left opening and a trigger for right opening, normally open contact. These should be a dry contact pulse for 0,5 seconds.
- 1.6. Emergency hold open can be triggered from the terminal panel (*see paragraph 5.6, page 11.*). The trigger requires a latching contact to remain open (The emergency mode is active if the contact is closed.). Change the dipswitch on the control board to change the direction of opening when in emergency mode.
- 1.7. There is allowance for a reception trigger, which can be used with a remote or a pushbutton placed at the reception desk. The trigger has a push-to-open, push-to-close function.

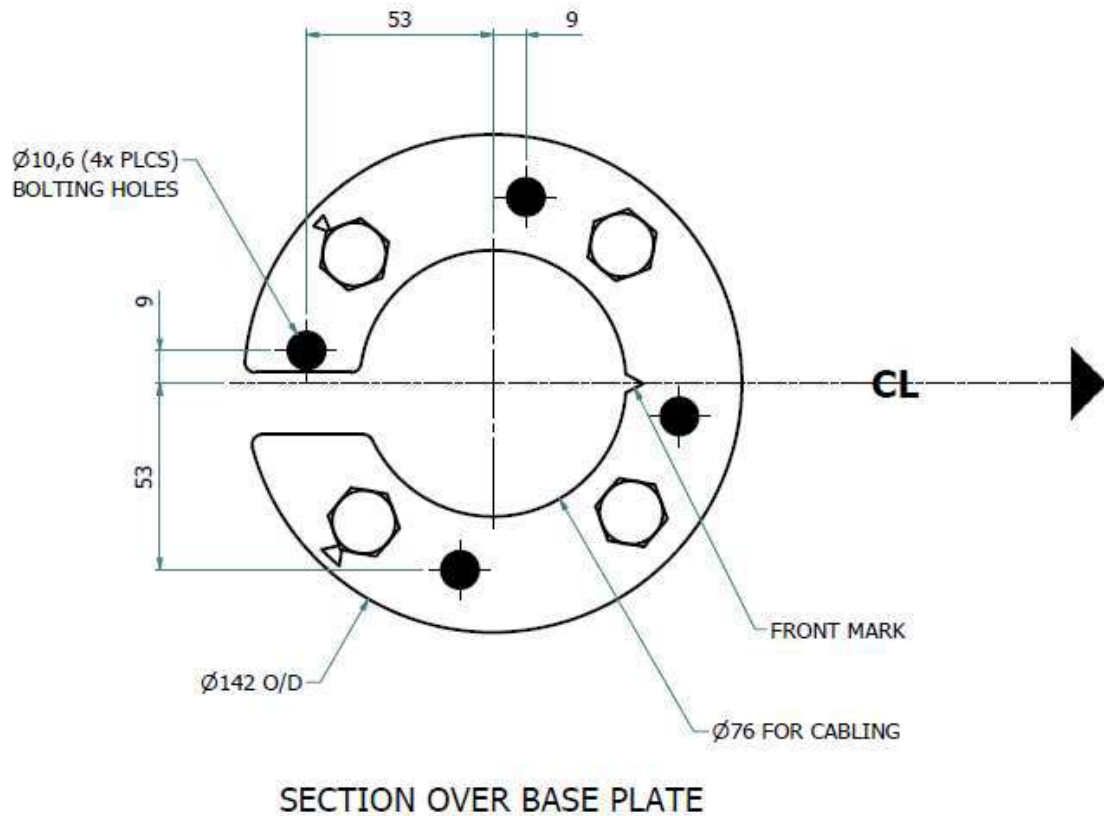
## 2. PREPARATION FOR INSTALLATION

- 2.1. Below is a typical view for clearance required by the gate. At least 10mm is required at the back. At least 50mm is required from the glass edge to a wall and this should be no more than 100mm



**Figure 2: Installation clearance for the gate**

- 2.2. Ensure the mounting area concrete strength is adequate and that a conduit is prepared for power & control cables. Also check that the floor is level and smooth.
- 2.3. The conduit should be flush with the floor and the power & control cables must extend +- 500mm from floor level to reach the connection terminals.

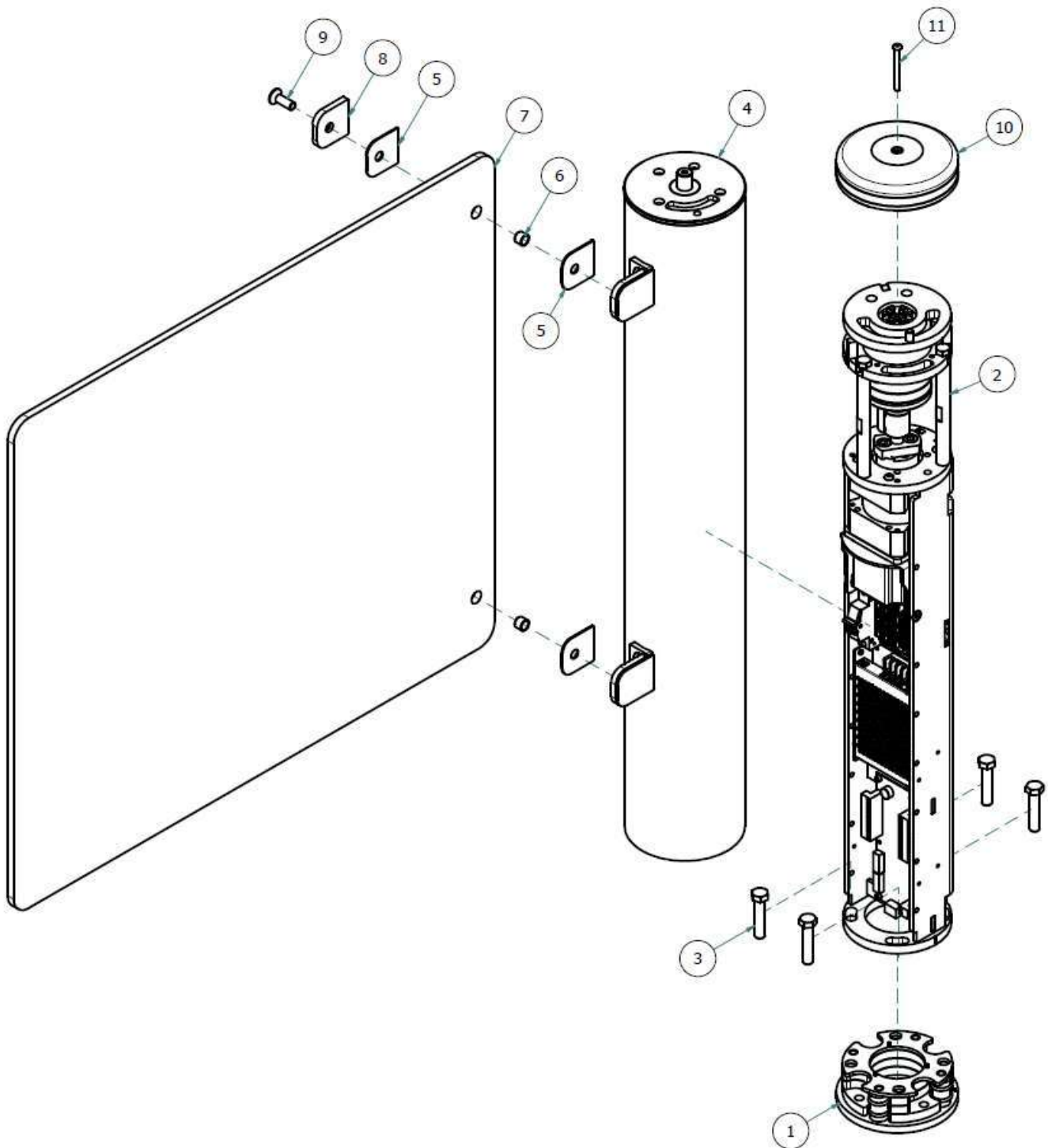


**Figure 3: Base ring positioning & bolting holes**

- 2.4. The base ring should be placed correctly positioned, with the 'V' front mark notch aligning with the centre line of the installation to the centreline of the installation.
- 2.5. Place the base ring, mark the holes with chalk. Remove and drill holes in concrete.
- 2.6. Bolt down the base assembly using the 4x bolting holes and suitable M10 Capscrew anchors.

### 3. PARTS

3.1. Below is an exploded view of the special needs gate and its main parts.



**Figure 4: Gate frame Assembly**

| Item | Qty | Description                       | Part Number   |
|------|-----|-----------------------------------|---------------|
| 1    | 1   | Bottom Bracket Weldment           | SNGA-WM-02    |
| 2    | 1   | Main Structure Assembly           | SNGA-WM-01    |
| 3    | 4   | M12 x 55 Hex Set Screw, ZP        | M12X55-HSS-ZP |
| 4    | 1   | Body Weldment                     | SNGA-WM-05    |
| 5    | 4   | Glass Clamp Rubber                | SNGA-PT-02    |
| 6    | 2   | 14x12x10 Nylon Sleeve             | 14x12x10-NYSL |
| 7    | 1   | Standard Gate Glass               | SNGA-PT-01    |
| 8    | 2   | Glass Mounting Tab                | SNGA-LC-13    |
| 9    | 2   | M10 x 30 Countersunk Capscrew, SS | M10x30-CSK-A2 |
| 10   | 1   | Top Cover with LED Assembly       | SNGA-SA-04    |
| 11   | 1   | M6x60 Buttonhead Capscrew, ZP     | M6x60-BHCS-ZP |

#### **4. OPENING & INSTALLATION**

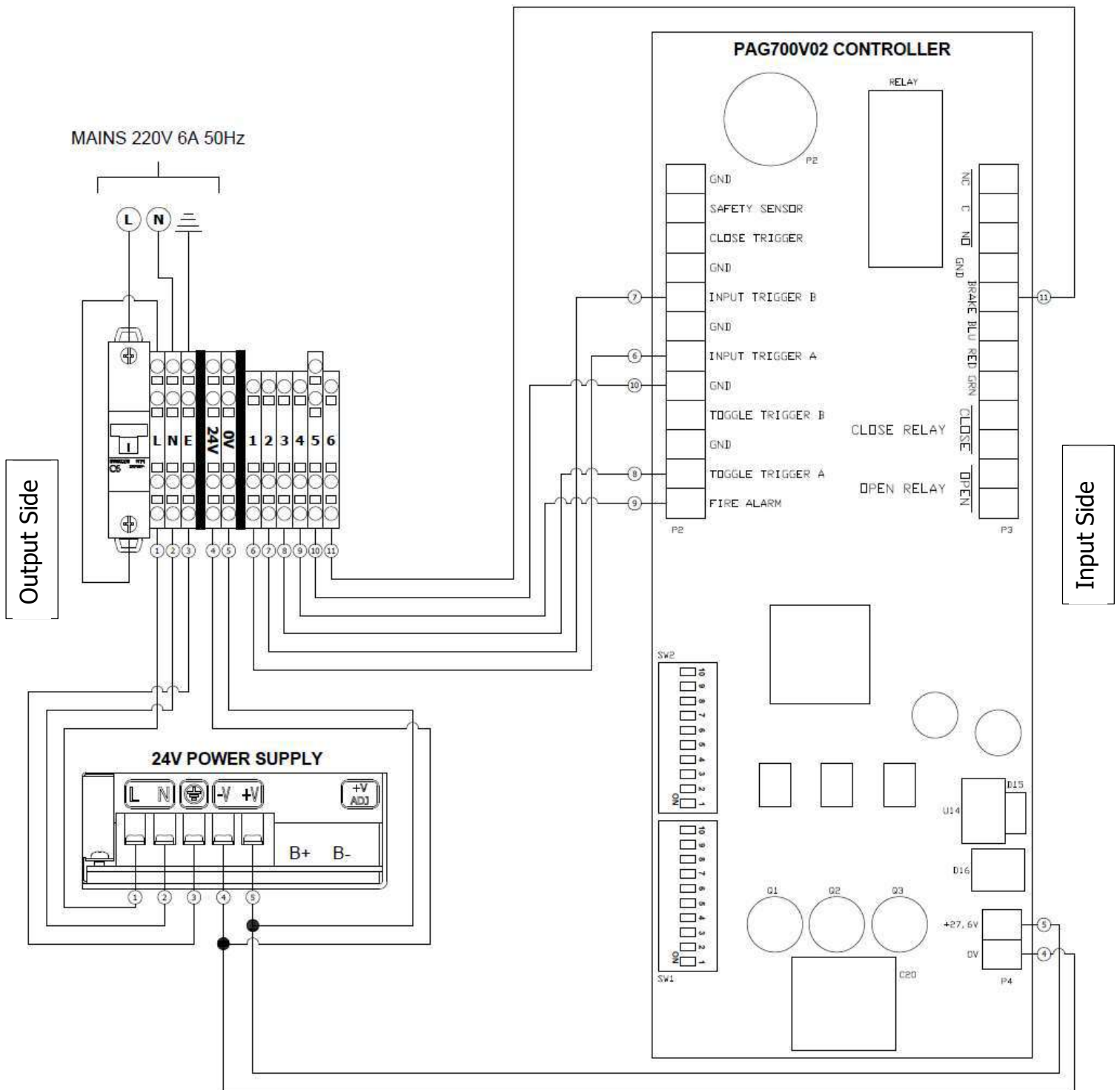
- 4.1. To open the structure, remove the top M6 screw (11) using a 4mm allen hex key. Lift off the top cover (10) taking care to disconnect the LED wires before removing entirely.
- 4.2. Lift off the body (4) with glass in place. The top of the body is engaged into a toothed bush and may require some force. Two people should lift the body, holding the glass and structure.
- 4.3. Unbolt the main structure (2) from the base bracket (1) by removing the 4 off M12 x 55 screws (3) using a 19 Spanner.
- 4.4. Place the base bracket on the floor over the conduit point as shown in *Figure 3: Base ring positioning & bolting holes*. Mark the hole positions for the holding down bolts as shown.
- 4.5. Drill the holes for the bolts and ensure that this lines up with the base bracket holes.
- 4.6. Pull the cabling through the centre hole of the base bracket, mount the base bracket down securely, pull the cabling through the bottom of the main structure and replace the structure onto the bracket using the bolts.
- 4.7. Connect the power and controls (see *section 5*) before replacing the body. The body must be placed with the controls facing toward the area where the gate will in the closed



position. If required, adjust the structure by loosening the screws (3) slightly and rotating the structure in the slots at the base.

## **5. CONNECTIONS AND SETUP**

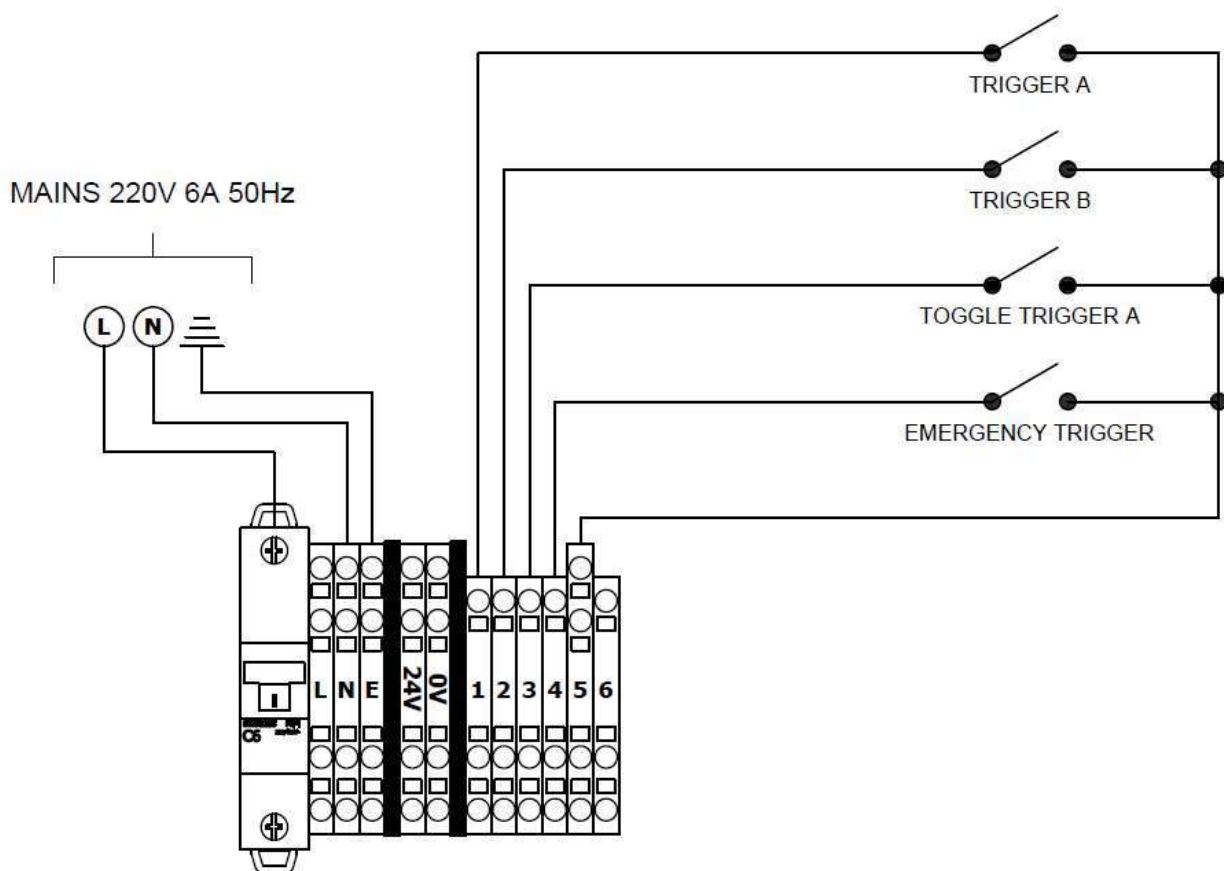
- 5.1. In the PAG700V02 controller, the most used triggers are wired to the terminal rail located above the power supply.
- 5.2. The power connections for mains power are also located at the terminal rail, with live wire connected to the circuit breaker.



**Figure 5: PAG700V02 Controller & Connections**

5.3. Connect 220v AC live power as shown in the diagram *Figure 6:* .

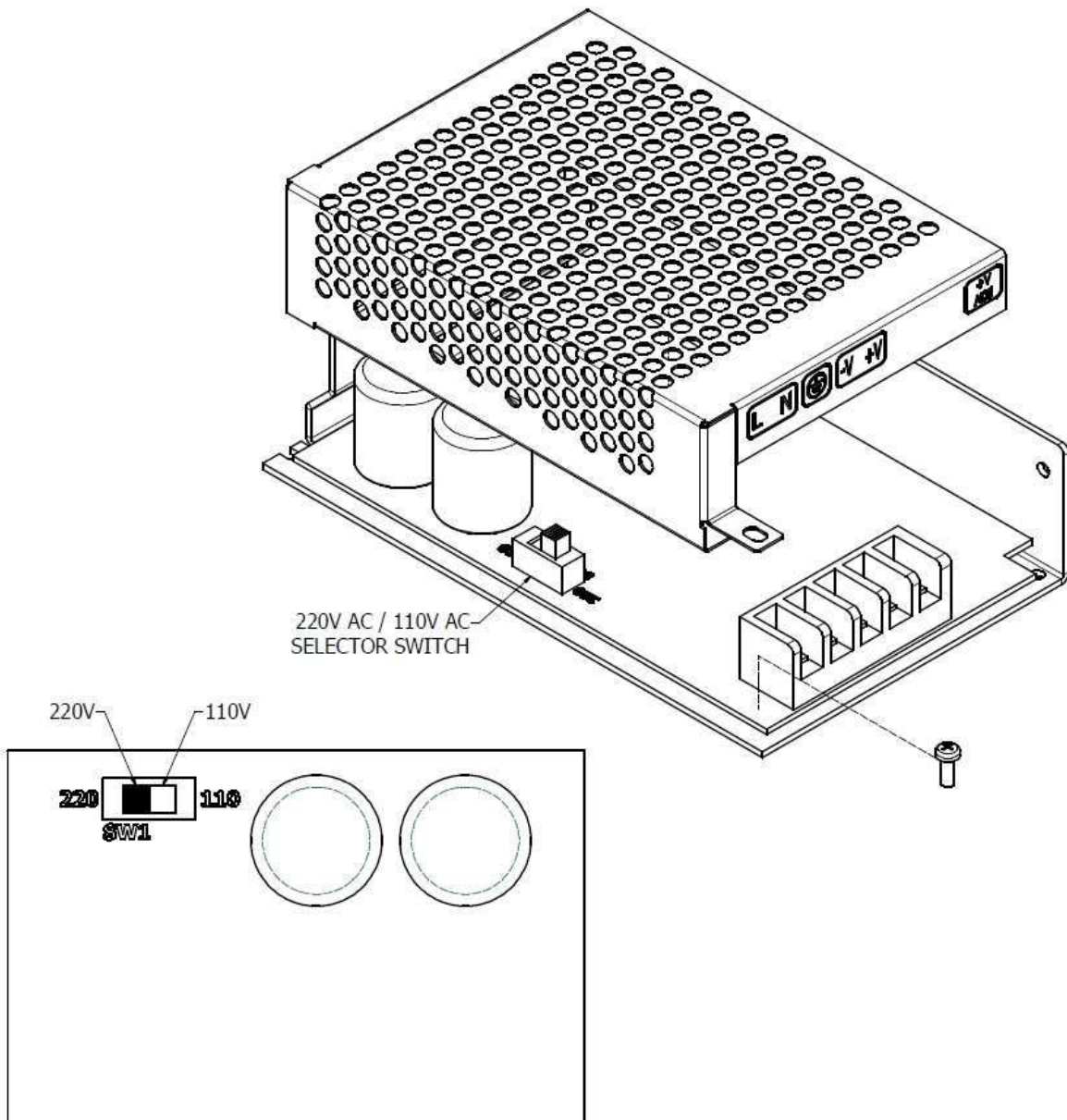
- 5.4. Connect the terminals 1 and 5 (trigger A and ground), and the terminals 2 and 5 (trigger B and ground) to control direction 1 and 2. These are normally open dry contacts and require a pulse of 0,5 seconds closing the contact.
- 5.5. Connect the terminals 4 and 5 (emergency trigger and ground) (GND) to control the emergency opening (latch).
- 5.6. Connect the terminals 3 and 5 (toggle trigger A and ground) to use as an opening latch for a remote control or push button at the reception desk.



**Figure 6: Client trigger connections**

## 6. **POWER SUPPLY AND VOLTAGE SELECTION**

- 6.1. The power supply has a switch that should be set for either 220V or 110V (for USA installations). Remove the front screw, slide the perforated top back and up to remove, to access the switch.



**Figure 7: Power supply mains change 220v - 110v**

## 7. CONTROLLER SWITCH SETTINGS

| Switch | Function                      | On     | Off      |   |
|--------|-------------------------------|--------|----------|---|
| 1,2    | Gate Open Speed - Slow        | -      | S1, S2   | Controls the <b>opening</b> speed of the gate. The options are slow, medium slow, medium fast and fast. |
| 1,2    | Gate Open Speed - Med. Slow   | S1     | S2       |   |
| 1,2    | Gate Open Speed - Med. Fast   | S2     | S1       |   |
| 1,2    | Gate Open Speed - Fast        | S1, S2 | -        |   |
| 3,4    | Gate Close Speed - Slow       | -      | S3, S4   | Controls the <b>closing</b> speed of the gate. The options are slow, medium slow, medium fast and fast. |
| 3,4    | Gate Close Speed - Med. Slow  | S3     | S4       |   |
| 3,4    | Gate Close Speed - Med. Fast  | S4     | S3       |   |
| 3,4    | Gate Close Speed - Fast       | S3, S4 | -        |   |
| 5      | Gate Motor Direction          | CCW    | CW       | Controls the gate motor direction which is normally clockwise.  |
| 6      | Input Test Enable             | ON     | OFF      |   |
| 7      | Motor Type                    | HOGAN  | Velocity | Provision for different motors. Factory set.  |
| 8      | Brake Mode in Open Position   | ON     | OFF      |   |
| 9      | Brake Mode in Closed Position | ON     | OFF      |   |
| 10     | Fire Alarm Direction          | B      | A        | Direction gate opens when fire alarm is triggered.  |
| 11     | Open Trigger Memory           | ON     | OFF      | Trigger memory for storing multiple triggers. This is by default off.                                   |
|        |                               |        |          |   |

|       |                                      |          |          |   |
|-------|--------------------------------------|----------|----------|---|
| 12,13 | Auto Close Timer – 8 Sec             | -        | S12, S13 | Controls the time the gate pauses after fully opening before closing again. The options are 8, 10, 15 and 30 seconds.   |
| 12,13 | Auto Close Timer – 10 Sec            | S12      | S13      |   |
| 12,13 | Auto Close Timer – 15 Sec            | S13      | S12      |   |
| 12,13 | Auto Close Timer – 30 Sec            | S12, S13 | -        |   |
|       |                                      |          |          |   |
| 14,15 | Close Delay – 0 Sec                  | -        | S14, S15 | Delay before closing after the closing signal from a toggle trigger is received. The options are 0, 2, 4 and 6 seconds. |
| 14,15 | Close Delay – 2 Sec                  | S14      | S15      |   |
| 14,15 | Close Delay – 4 Sec                  | S15      | S14      |   |
| 14,15 | Close Delay – 6 Sec                  | S14, S15 | -        |   |
|       |                                      |          |          |   |
| 16    | Operation Buzzer                     | ON       | OFF      | Buzzer sound on operation.  |
| 17    | Spare                                | -        | -        |   |
| 18    | Trigger Hold Open                    | ON       | OFF      | Hold open function for trigger if contact is closed indefinitely.   |
| 19    | LEARN MODE – Switch ON for 5 seconds | ON       | OFF      | For factory settings.   |
| 20    | Test Mode – 2 Second Auto Cycle      | ON       | OFF      |   |

## **8. DRAWINGS**

8.1. Drawings that are included with this manual is listed below:

8.1.1. SNGA-AS-01 – Rev. 6 (Sheet 1 & 2)

8.1.2. SNGA-SA-01 – Rev. 6

8.1.3. SNGA-SA-02 – Rev. 6

8.1.4. SNGA-SA-03 – Rev. 7

8.1.5. SNGA-SA-04 – Rev. 6

8.1.6. SNGA-SA-05 – Rev. 6

8.1.7. 1278-WD-01 – Rev. 1

8.1.8. 1278-WD-02 – Rev. 0

PROJECT: **SPECIAL NEEDS GATE AUTOMATIC**



DIMENSIONAL TOLERANCES (UNLESS OTHERWISE SPECIFIED):

| FROM: | TO   | TOLERANCE |
|-------|------|-----------|
| 0     | 25   | +- 0,25   |
| 26    | 100  | +- 0,50   |
| 101   | 250  | +- 1,00   |
| 251   | 500  | +- 1,50   |
| 501   | 1000 | +- 2,50   |
| 1001  | >    | +- 3,00   |

APPROVALS:

|               |         |            |
|---------------|---------|------------|
| Drawn By:     | Ben     | 2022/01/19 |
| Designed By:  | Ben     | 2022/01/19 |
| Checked By:   | C SACKS | 2022/01/19 |
| Eng Approved: | C SACKS | 2022/01/19 |

MASS: 44.39 kg

MATERIAL: Stainless Steel Grade 304 -

FINISH: NATURAL

DESCRIPTION: **GENERAL ASSEMBLY**

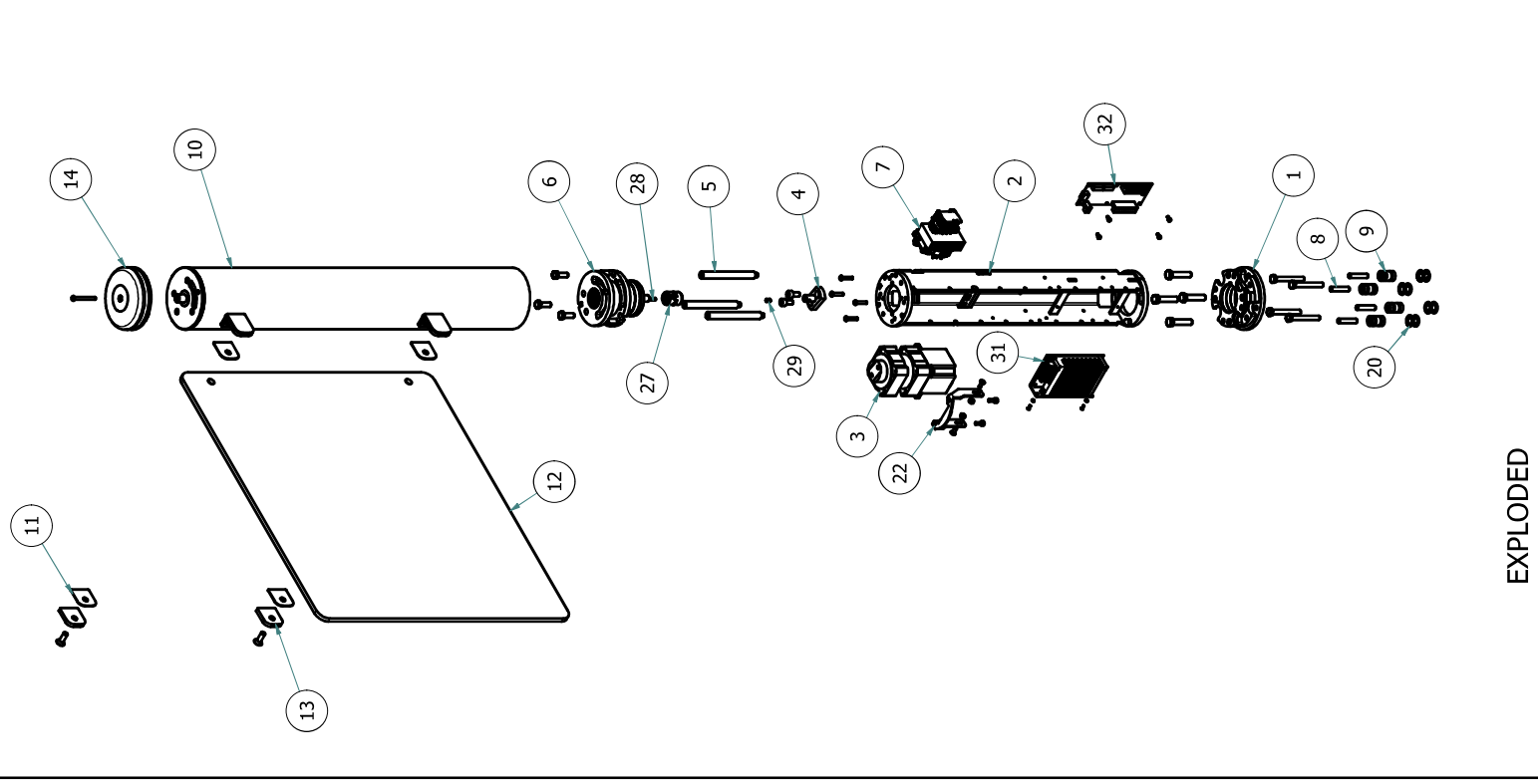
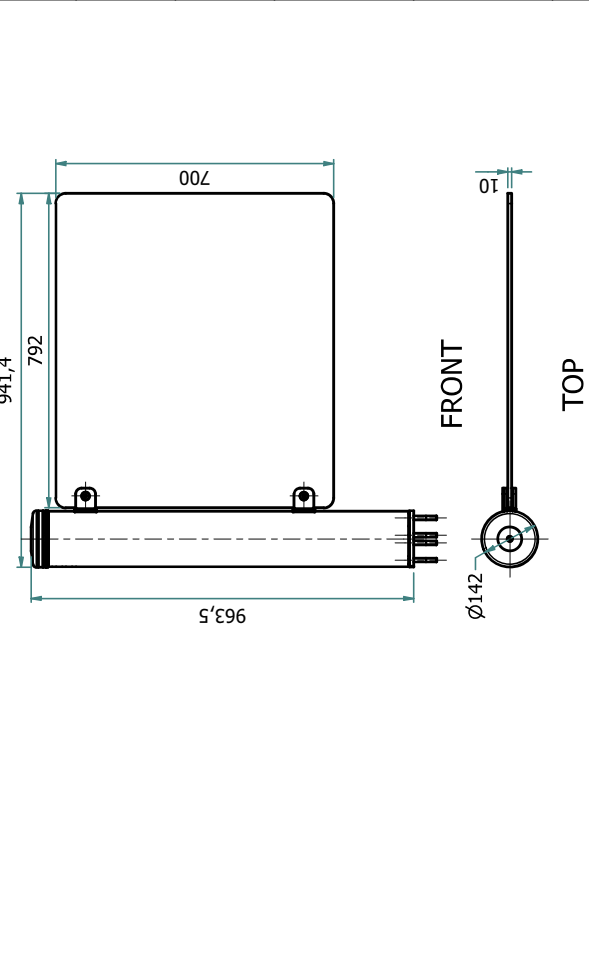
PART NUMBER: **SNGA-AS-01**

REV: **6**

SHEET 1 OF 2

PARTS LIST

| ITEM | QTY | PART NUMBER    | DESCRIPTION                                |
|------|-----|----------------|--|
| 1    | 1   | SNGA-WM-02     | WELD ASSEMBLY: BOTTOM BRACKET              |
| 2    | 1   | SNGA-WM-01     | WELD ASSEMBLY: MAIN STRUCTURE              |
| 3    | 1   | MOTOR-SWIFT    | MOTOR-SWIFT                                |
| 4    | 1   | SNGA-WM-08     | WELD ASSEMBLY: MOTOR COUPLING              |
| 5    | 3   | SNGA-MA-06     | SUPPORT PIN                                |
| 6    | 1   | SNGA-SA-01     | SUB ASSEMBLY: MOTOR BRAKE                  |
| 7    | 1   | SNGA-SA-03     | SUB ASSEMBLY: CIRCUIT BREAKER              |
| 8    | 4   | SNGA-MA-01     | PIN  |
| 9    | 4   | SNGA-MA-05     | CENTERING WHEEL                            |
| 10   | 1   | SNGA-WM-05     | WELD ASSEMBLY: BODY                        |
| 11   | 4   | SNGA-PT-02     | GLASS CLAMP RUBBER                         |
| 12   | 1   | SNGA-PT-01-1   | GLASS GATE STD                             |
| 13   | 2   | SNGA-LC-13     | GLASS MOUNTING TAB MOVING                  |
| 14   | 1   | SNGA-SA-04     | ASSEMBLY: TOP COVER WITH LED               |
| 15   | 4   | M6x30-BHCS-ZP  | M6x30 BUTTONHEAD CAPSCREW, ZP              |
| 16   | 2   | M10x20-SHCS-ZP | M10x20 SOCKETHEAD CAPSCREW, ZP             |
| 17   | 3   | M10x30-HSS-ZP  | M10x30 HEX SET SCREW, 4.8, ZP              |
| 18   | 2   | M10x30-CSK-ZP  | M10x30 SOCKETHEAD COUNTERSUNK CAPSCREW, ZP |
| 19   | 1   | M6x60-BHCS-ZP  | M6x60 BUTTONHEAD CAPSCREW, ZP              |
| 20   | 8   | o-ring-22x4    | o-ring-22x4                                |
| 21   | 2   | M6x16-SHCS-ZP  | M6x16 SOCKETHEAD CAPSCREW, ZP              |
| 22   | 1   | SNGA-LC-26     | MOTOR BRACKET                              |
| 23   | 2   | M6-HN-ZP       | M6 HEX NUT, ZP                             |
| 24   | 2   | M6x16-CSK-ZP   | M6x16 SOCKETHEAD COUNTERSUNK CAPSCREW, ZP  |
| 25   | 4   | M10x80-HB-ZP   | M10x80 HEX BOLT 4.8, ZP                    |
| 26   | 4   | M12x55-HSS-ZP  | M12x55 HEX SET SCREW, 4.8, ZP              |
| 27   | 1   | SNGA-SA-05     | ASSEMBLY COUPLING - L 070                  |
| 28   | 1   | SNGA-MA-31     | KEY  |
| 29   | 1   | SNGA-MA-32     | KEY  |
| 30   | 2   | M6x8-FPS5-ZP   | M6x8 FLAT POINT SET SCREW, ZP              |
| 31   | 1   | SC-120-24      | SC-120-24                                  |
| 32   | 1   | PAG700TUR      | BARRIER LOGIC                              |
| 33   | 2   | M3-HN-ZP       | M3 HEX NUT, GR5                            |
| 34   | 2   | M3x10-CSK-ZP   | M3x10 SOCKETHEAD COUNTERSUNK CAPSCREW, ZP  |
| 35   | 4   | M4x8-SHCS-ZP   | M4x8 SOCKETHEAD CAPSCREW, ZP               |



EXPLODED





Turnstar Systems (Pty) Ltd.

18, 6th Street  
Wynberg  
Sandton  
2090  
South Africa

Tel: +27(0)11 786 1633  
Fax: +27(0)11 440 5839

PROJECT:

### SPECIAL NEEDS GATE AUTOMATIC

SCALE: NTS



FIRST ANGLE  
PROJECTION

DIMENSIONAL TOLERANCES  
(UNLESS OTHERWISE SPECIFIED):

| FROM: | TO   | TOLERANCE |
|-------|------|-----------|
| 0     | 25   | ± 0,25    |
| 26    | 100  | ± 0,50    |
| 101   | 250  | ± 1,00    |
| 251   | 500  | ± 1,50    |
| 501   | 1000 | ± 2,50    |
| 1001  | >    | ± 3,00    |

APPROVALS:

|               |         |            |
|---------------|---------|------------|
| Drawn By:     | Ben     | 2022/01/19 |
| Designed By:  | Ben     | 2022/01/19 |
| Checked By:   | C SACKS | 2022/01/19 |
| Eng Approved: | C SACKS | 2022/01/19 |

MASS:

44,39 kg

MATERIAL:

Stainless Steel Grade 304 -

FINISH:

NATURAL

DESCRIPTION:

**GENERAL ASSEMBLY**

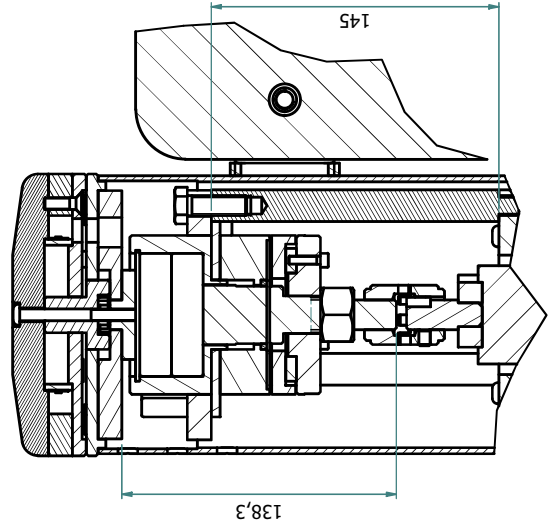
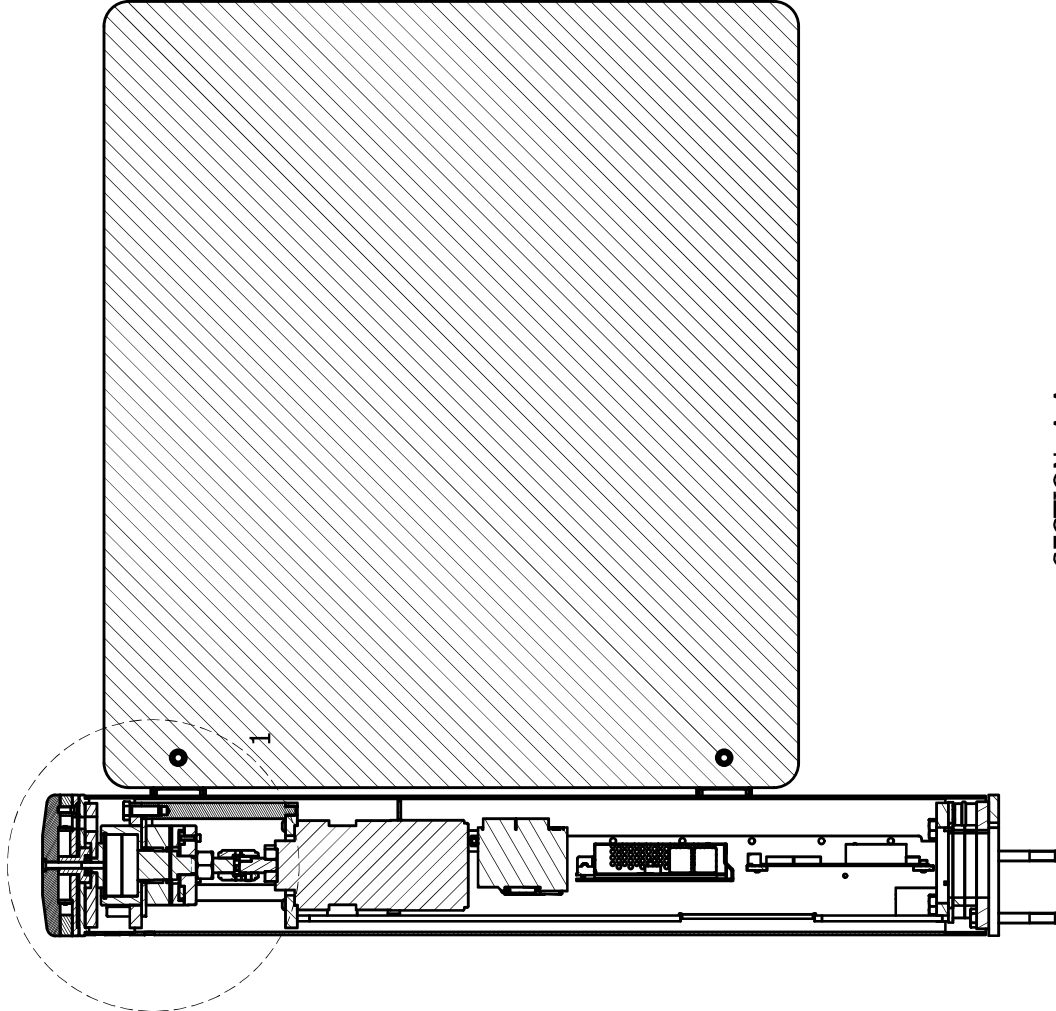
PART NUMBER:

**SNGA-AS-01**

REV:

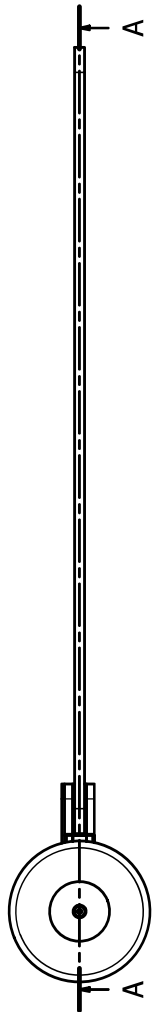
**6**

SHEET 2 OF 2



DETAIL: 1

SECTION: A-A



TOP



Turnstar Systems (Pty) Ltd.  
18, 6th Street  
Wynberg  
Sandton  
2090  
South Africa

Tel: +27(0)11 786 1633  
Fax: +27(0)11 440 5839

PROJECT: **SPECIAL NEEDS GATE AUTOMATIC**



DIMENSIONAL TOLERANCES (UNLESS OTHERWISE SPECIFIED):

| FROM: | TO   | TOLERANCE |
|-------|------|-----------|
| 0     | 25   | ± 0,25    |
| 26    | 100  | ± 0,50    |
| 101   | 250  | ± 1,00    |
| 251   | 500  | ± 1,50    |
| 501   | 1000 | ± 2,50    |
| 1001  | >    | ± 3,00    |

APPROVALS:

|               |         |            |
|---------------|---------|------------|
| Drawn By:     | Ben     | 2022/01/19 |
| Designed By:  | Ben     | 2022/01/19 |
| Checked By:   | C SACKS | 2022/01/19 |
| Eng Approved: | C SACKS | 2022/01/19 |

MASS: 4,20 kg

MATERIAL: Steel, Mild -

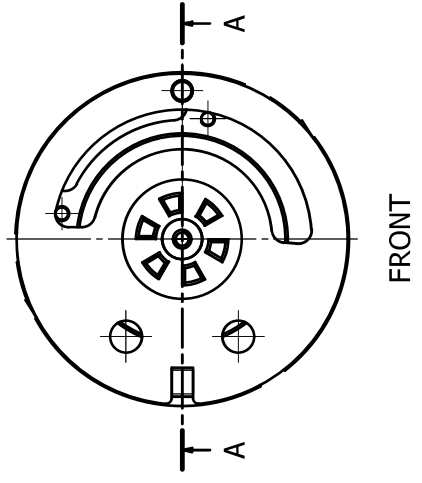
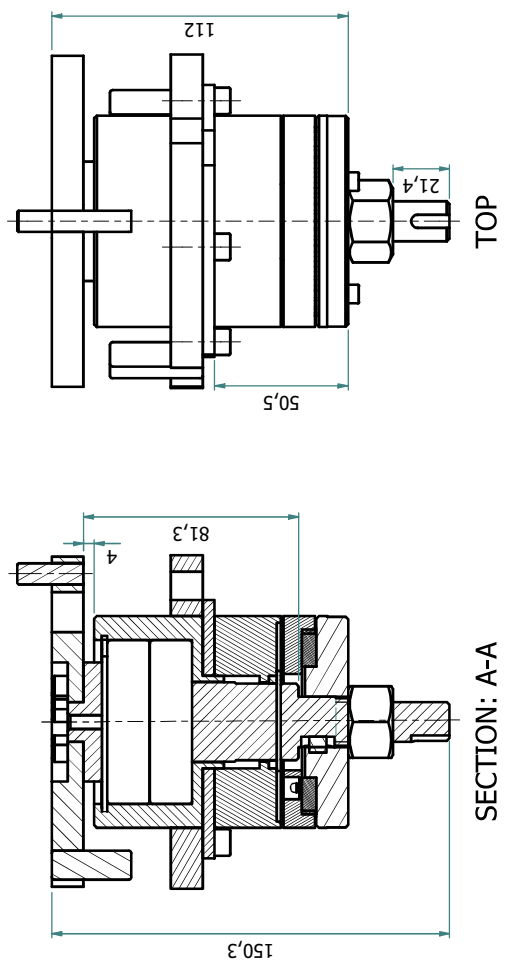
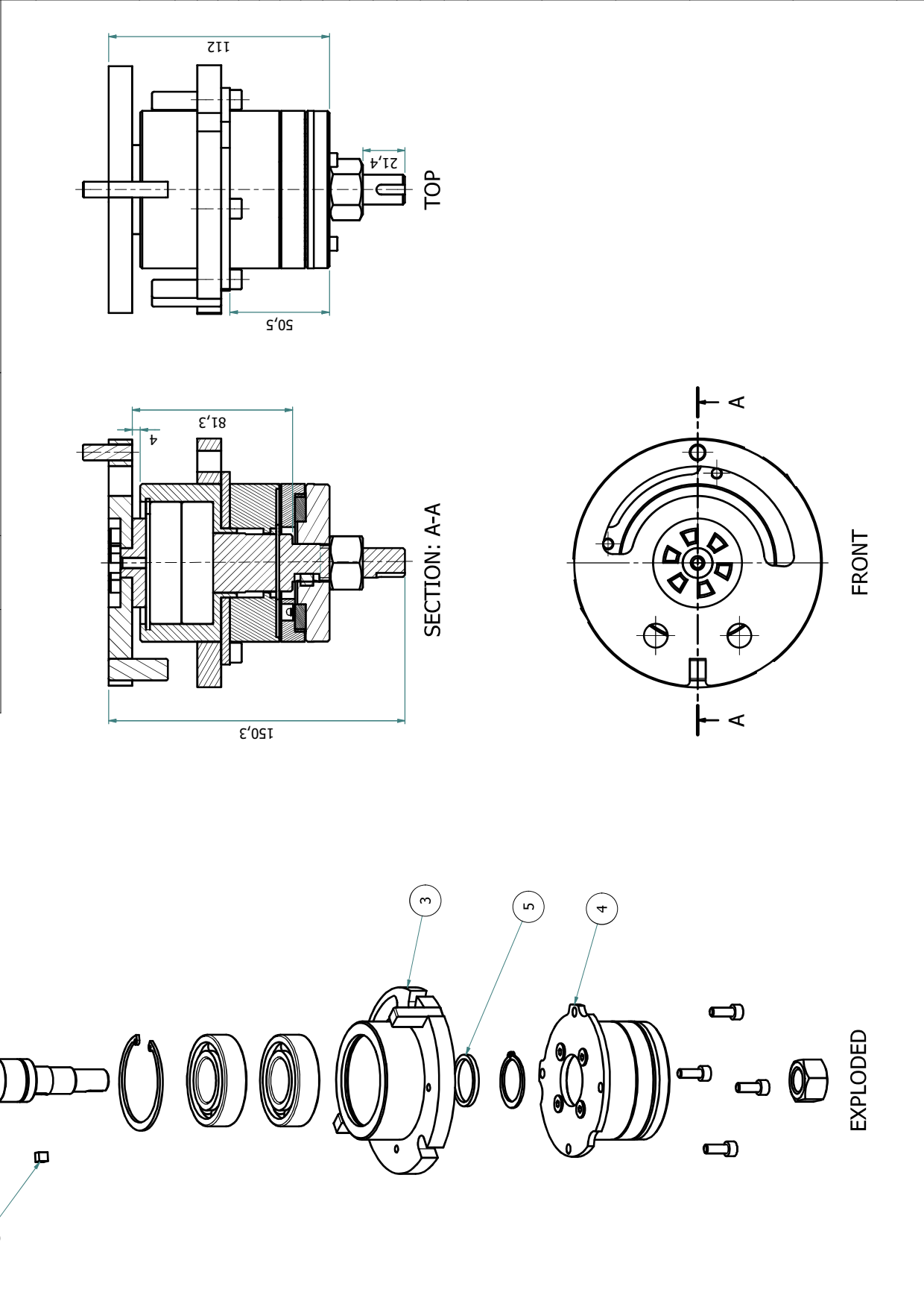
FINISH: Galvanised Finish

DESCRIPTION: **SUB ASSEMBLY: MOTOR BRAKE**

|              |                   |
|--------------|-------------------|
| PART NUMBER: | <b>SNGA-SA-01</b> |
| REV:         | <b>6</b>          |

PARTS LIST

| ITEM | QTY | PART NUMBER    | DESCRIPTION  |
|------|-----|----------------|--|
| 1    | 1   | SNGA-WM-03     | WELD ASSEMBLY: MAIN SHAFT                          |
| 2    | 1   | SNGA-MA-25     | KEY  |
| 3    | 1   | SNGA-WM-04     | WELD ASSEMBLY: BEARING HOUSING                     |
| 4    | 1   | SNGA-SA-02     | SUB ASSEMBLY: BRAKE                                |
| 5    | 1   | SNGA-MA-23     | WASHER   |
| 6    | 4   | M6x16-SHCS-ZP  | M6x16 SOCKETHEAD CAPSCREW, ZP                      |
| 7    | 1   | M18-HN-ZP      | M18 HEX NUT, ZP                                    |
| 8    | 2   | 6206-2RS1-DGGB | 62 OD x 30 ID x 16 H DEEP GROOVE BALL BEARING, 2RS |
| 9    | 1   | 62x2-CCIN-ZP   | 62x2 INTERNAL CIRCLIP, ZP                          |
| 10   | 1   | 30x1,5-CCEX-ZP | 30x1,5 EXTERNAL CIRCLIP, ZP                        |



PROJECT:

**SPECIAL NEEDS GATE  
 AUTOMATIC**



DIMENSIONAL TOLERANCES  
 (UNLESS OTHERWISE SPECIFIED):

| FROM: | TO   | TOLERANCE |
|-------|------|-----------|
| 0     | 25   | ± 0,25    |
| 26    | 100  | ± 0,50    |
| 101   | 250  | ± 1,00    |
| 251   | 500  | ± 1,50    |
| 501   | 1000 | ± 2,50    |
| 1001  | >    | ± 3,00    |

APPROVALS:

|               |         |            |
|---------------|---------|------------|
| Drawn By:     | Ben     | 2022/01/19 |
| Designed By:  | Ben     | 2022/01/19 |
| Checked By:   | C SACKS | 2022/01/19 |
| Eng Approved: | C SACKS | 2022/01/19 |

MASS:

0,87 kg

MATERIAL:

Steel, Mild -

FINISH:

Galvanised Finish

DESCRIPTION:

**SUB ASSEMBLY: BRAKE**

PART NUMBER:

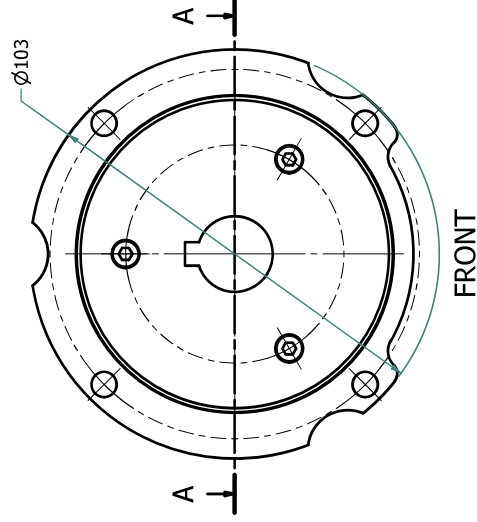
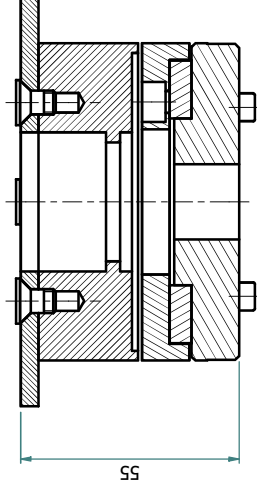
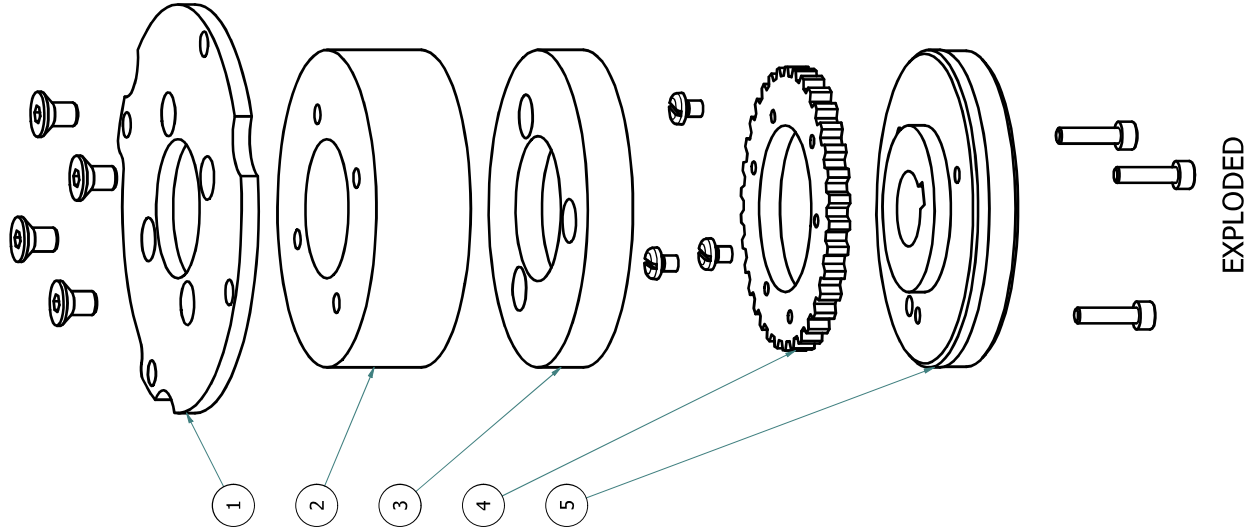
**SNGA-SA-02**

REV:

**6**

PARTS LIST

| ITEM | QTY | PART NUMBER   | DESCRIPTION                               |
|------|-----|---------------|---|
| 1    | 1   | SNGA-LC-10    | BRAKE FIX PLATE                           |
| 2    | 1   | BRAKE-1       | BRAKE-1                                   |
| 3    | 1   | BRAKE-2       | BRAKE-2                                   |
| 4    | 1   | BRAKE-3       | BRAKE-3                                   |
| 5    | 1   | SNGA-MA-04    | BRAKE SUPPORT                             |
| 6    | 3   | M4X5-SPHS-ZP  | M4X5-SPHS-ZP                              |
| 7    | 3   | M4X16-SHCS-ZP | M4X16 SOCKETHEAD CAPSCREW, ZP             |
| 8    | 4   | M6X10-CSK-ZP  | M6X10 SOCKETHEAD COUNTERSUNK CAPSCREW, ZP |



PROJECT:

**SPECIAL NEEDS GATE  
 AUTOMATIC**



DIMENSIONAL TOLERANCES  
 (UNLESS OTHERWISE SPECIFIED):

| FROM: | TO   | TOLERANCE |
|-------|------|-----------|
| 0     | 25   | ± 0.25    |
| 26    | 100  | ± 0.50    |
| 101   | 250  | ± 1.00    |
| 251   | 500  | ± 1.50    |
| 501   | 1000 | ± 2.50    |
| 1001  | >    | ± 3.00    |

APPROVALS:

|               |         |            |
|---------------|---------|------------|
| Drawn By:     | BP NEL  | 2022/04/12 |
| Designed By:  | BP NEL  | 2022/04/12 |
| Checked By:   | C SACKS | 2022/04/12 |
| Eng Approved: | C SACKS | 2022/04/12 |

MASS:

0,20 kg

MATERIAL:

STD -

FINISH:

NATURAL

DESCRIPTION:

**SUB ASSEMBLY: CIRCUIT  
 BREAKER**

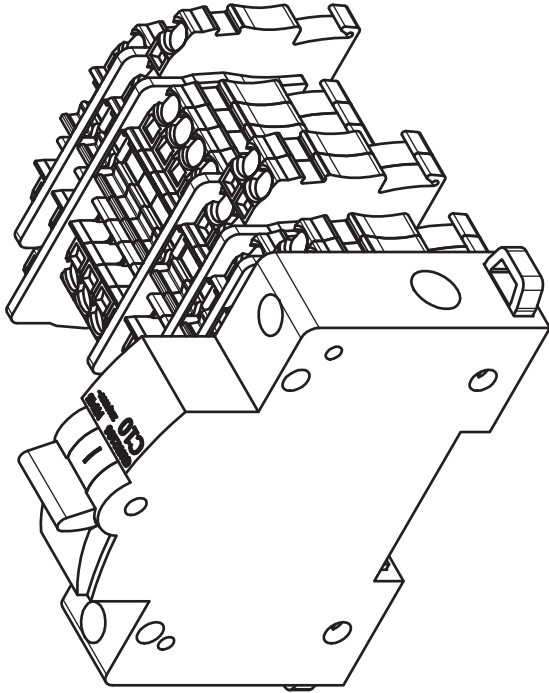
PART NUMBER:

**SNGA-SA-03**

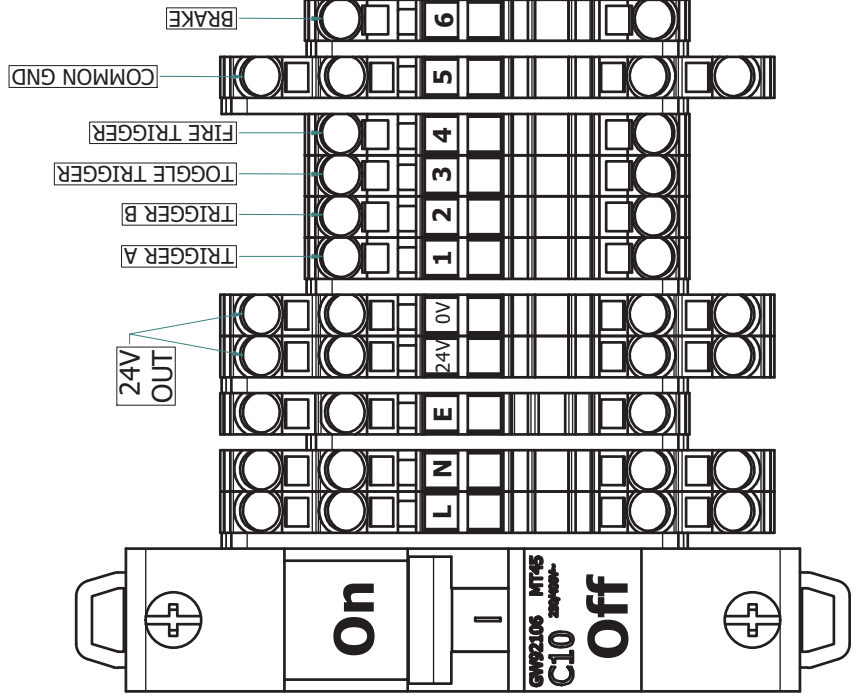
REV:

**7**

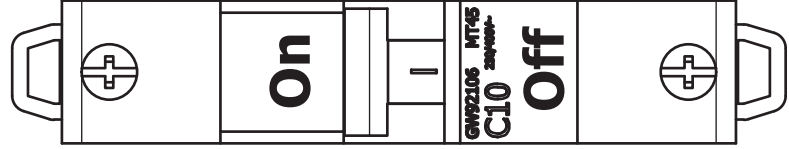
| ITEM | QTY | PART NUMBER   | DESCRIPTION |
|------|-----|---------------|-------------|
| 2    | 1   | GW92106_0_ASM |             |
| 3    | 3   | 2002-1403     |             |
| 4    | 2   | 2002-1404     |             |
| 5    | 1   | 2002-1307_0   |             |
| 6    | 5   | 2002-1201     |             |
| 7    | 3   | 2002-1294     |             |
| 8    | 3   | 2002-1394     |             |



ISOMETRIC (TR)



FRONT





Turnstar Systems (Pty) Ltd.  
18, 6th Street  
Wynberg  
Sandton  
2090  
South Africa

Tel: +27(0)11 786 1633  
Fax: +27(0)11 440 5839

PROJECT: **SPECIAL NEEDS GATE AUTOMATIC**



DIMENSIONAL TOLERANCES (UNLESS OTHERWISE SPECIFIED):

| FROM: | TO   | TOLERANCE |
|-------|------|-----------|
| 0     | 25   | ± 0,25    |
| 26    | 100  | ± 0,50    |
| 101   | 250  | ± 1,00    |
| 251   | 500  | ± 1,50    |
| 501   | 1000 | ± 2,50    |
| 1001  | >    | ± 3,00    |

APPROVALS:

|               |         |            |
|---------------|---------|------------|
| Drawn By:     | Ben     | 2022/01/19 |
| Designed By:  | Ben     | 2022/01/19 |
| Checked By:   | C SACKS | 2022/01/19 |
| Eng Approved: | C SACKS | 2022/01/19 |

MASS: 2,70 kg

MATERIAL: Stainless Steel Grade 304 -

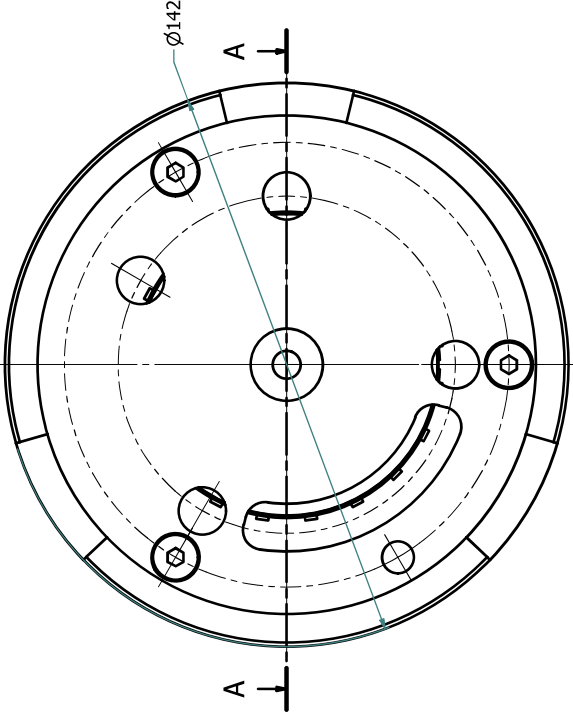
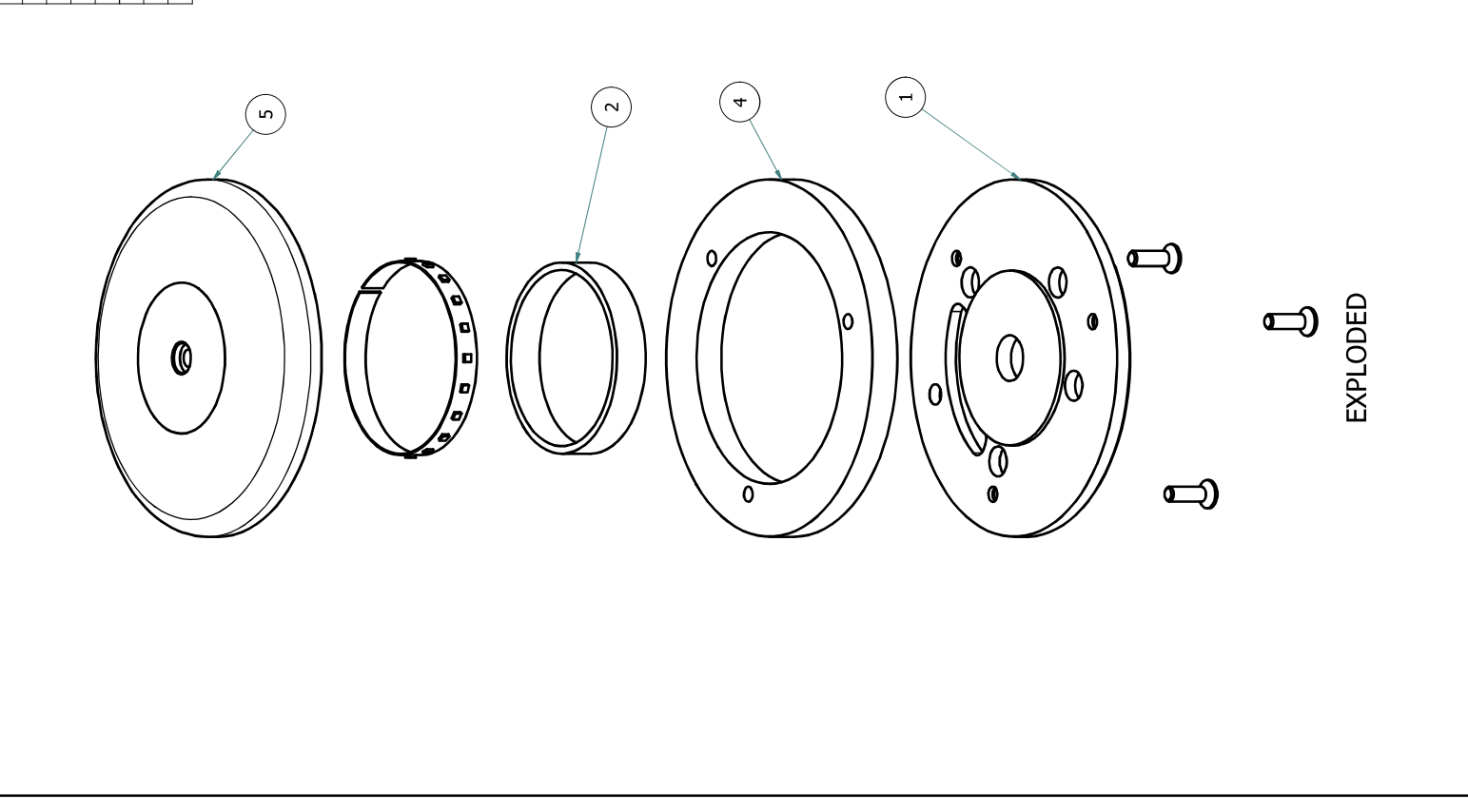
FINISH: Brush Finish # 200

DESCRIPTION: **ASSEMBLY: TOP COVER WITH LED**

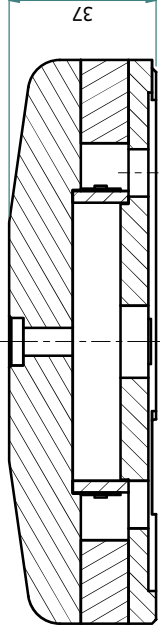
|              |                   |
|--------------|-------------------|
| PART NUMBER: | <b>SNGA-SA-04</b> |
| REV:         | <b>6</b>          |

PARTS LIST

| ITEM | QTY | PART NUMBER  | DESCRIPTION                               |
|------|-----|--------------|---|
| 1    | 1   | SNGA-MA-24   | LED SUPPORT PLATE                         |
| 2    | 1   | SNGA-MA-20   | LED SUPPORT RING                          |
| 3    | 1   | LED-RING     | LED-RING                                  |
| 4    | 1   | SNGA-MA-16   | LED COVER                                 |
| 5    | 1   | SNGA-MA-15   | TOP COVER                                 |
| 6    | 3   | M6x20-CSK-ZP | M6x20 SOCKETHEAD COUNTERSUNK CAPSCREW, ZP |



BOTTOM



SECTION: A-A

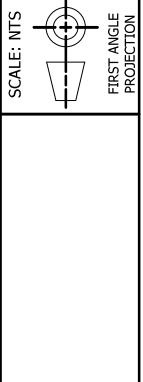
EXPLODED



Turnstar Systems (Pty) Ltd.  
 18, 6th Street  
 Wynberg  
 Sandton  
 2090  
 South Africa

Tel: +27(0)11 786 1633  
 Fax: +27(0)11 440 5839

PROJECT:  
**SPECIAL NEEDS GATE  
 AUTOMATIC**



DIMENSIONAL TOLERANCES  
 (UNLESS OTHERWISE SPECIFIED):

| FROM: | TO   | TOLERANCE |
|-------|------|-----------|
| 0     | 25   | +- 0,25   |
| 26    | 100  | +- 0,50   |
| 101   | 250  | +- 1,00   |
| 251   | 500  | +- 1,50   |
| 501   | 1000 | +- 2,50   |
| 1001  | >    | +- 3,00   |

APPROVALS:

|               |         |            |
|---------------|---------|------------|
| Drawn By:     | Ben     | 2022/01/19 |
| Designed By:  | Ben     | 2022/01/19 |
| Checked By:   | C SACKS | 2022/01/19 |
| Eng Approved: | C SACKS | 2022/01/19 |

MASS:  
 0,14 kg

MATERIAL:  
 Steel, Mild -

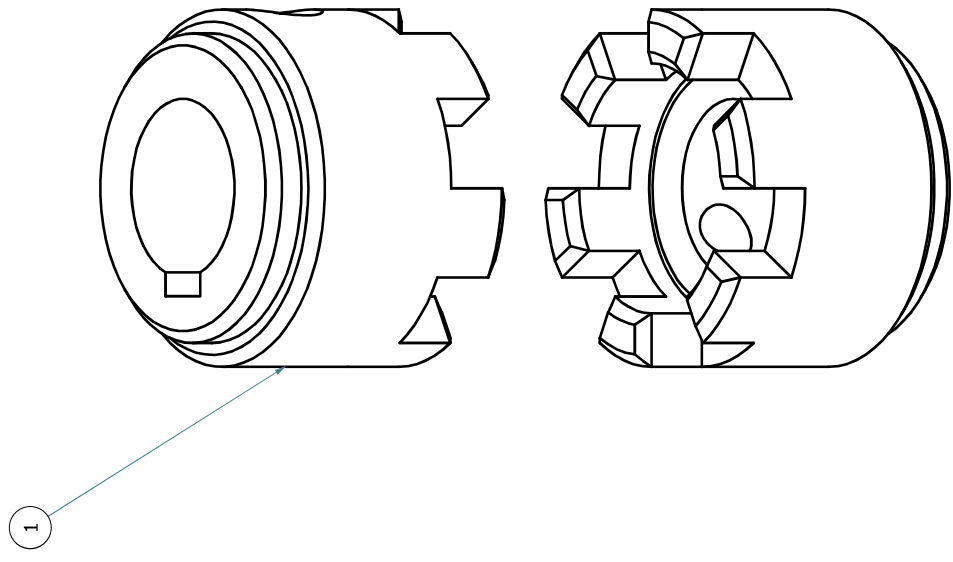
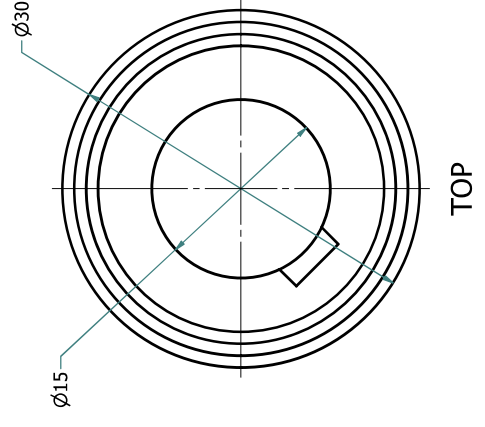
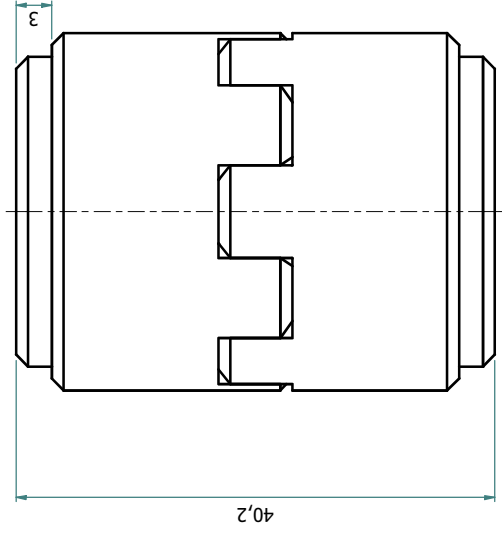
FINISH:  
 Galvanised Finish

DESCRIPTION:  
**ASSEMBLY COUPLING - L 070**

|              |                   |
|--------------|-------------------|
| PART NUMBER: | <b>SNGA-SA-05</b> |
| REV:         | <b>6</b>          |

SHEET 1 OF 1

| PARTS LIST |     |             |             |
|------------|-----|-------------|-------------|
| ITEM       | QTY | PART NUMBER | DESCRIPTION |
| 1          | 2   | SNGA-MA-27  | COUPLING    |





Turnstar Systems (Pty) Ltd.  
 18, 6th Street  
 Wynberg  
 Sandton  
 2090  
 South Africa  
 Tel: +27(0)11 786 1633  
 Fax: +27(0)11 440 5839

PROJECT #: **1278**

PROJECT: **AUTOMATIC SPECIAL NEEDS GATE**

SITE: -----

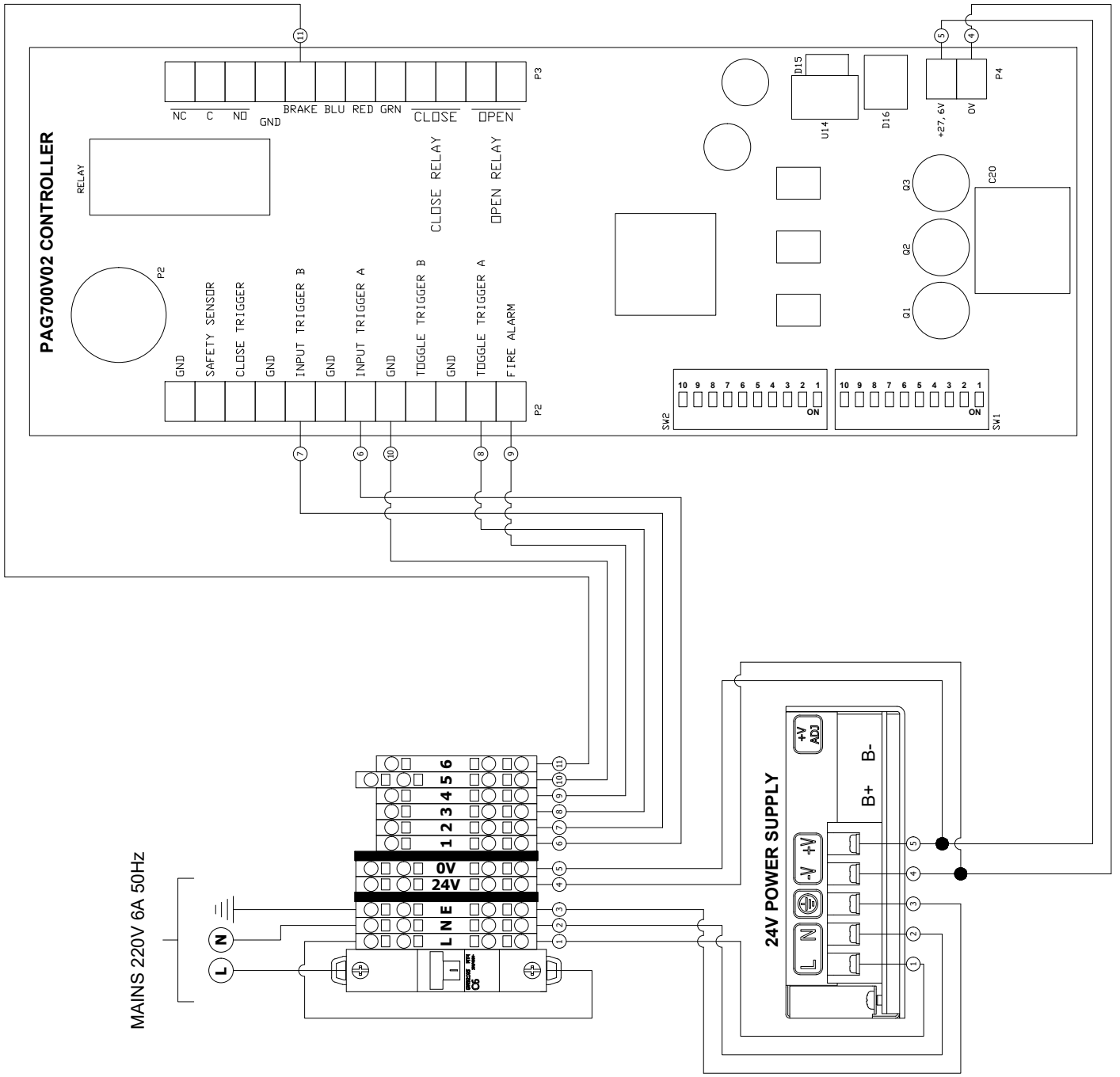
CLIENT: -----

| DIMENSION TOLERANCES<br>(Unless otherwise specified): |      | SCALE: NTS |
|---|------|------------|
| FROM:   | TO   | TOLERANCE  |
| 0   | 25   | + - 0.25   |
| 26  | 100  | + - 0.50   |
| 101   | 250  | + - 1.00   |
| 251   | 500  | + - 1.50   |
| 501   | 1000 | + - 2.50   |
| 1001  | >    | + - 3.00   |

APPROVALS: PAGE SIZE: A4  
 Drawn: -----  
 Checked: -----  
 Approved: -----

DESCRIPTION:  
**PAG700V02 CONTROLLER GENERAL DIAGRAM**

NUMBER: **1278-WD-01** REV: **1**





Turnstar Systems (Pty) Ltd.  
 18, 6th Street  
 Wynberg  
 Sandton  
 2090  
 South Africa

Tel: +27(0)11 786 1633  
 Fax: +27(0)11 440 5839

PROJECT #:

**1278**

PROJECT:

**AUTOMATIC SPECIAL  
 NEEDS GATE**

SITE:

----

CLIENT:

----

| DIMENSION TOLERANCES<br>(Unless otherwise specified): |      | SCALE: NTS |
|---|------|------------|
| FROM:   | TO   | TOLERANCE  |
| 0   | 25   | + - 0.25   |
| 26  | 100  | + - 0.50   |
| 101   | 250  | + - 1.00   |
| 251   | 500  | + - 1.50   |
| 501   | 1000 | + - 2.50   |
| 1001  | >    | + - 3.00   |

APPROVALS: PAGE SIZE: A4

Drawn: ----

Checked: ----

Approved: ----

DESCRIPTION:

**PAG700V02 CONTROLLER  
 SECONDARY DIAGRAM**

NUMBER:

**1278-WD-02**

REV:

**0**

